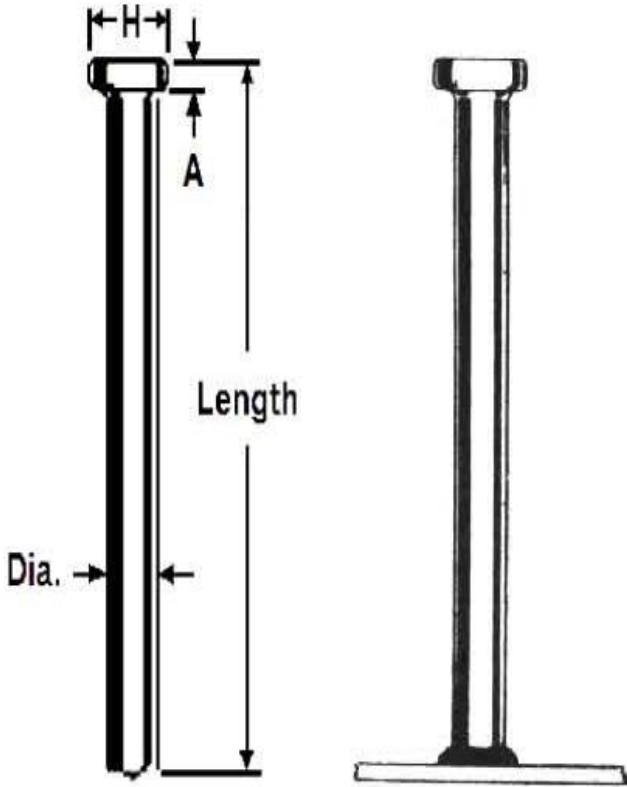


## H4L Headed Concrete Anchor (PE)

INDUSTRY: CONSTRUCTION



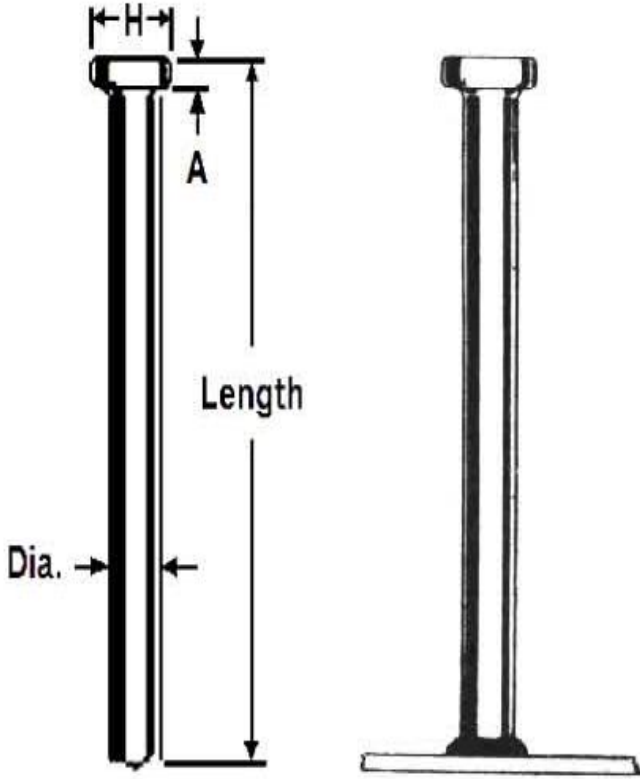
| Stud Dia. (MM) | Length (MM) BWL | Length (MM) AWL | Weight (Approx.) Kg/1000 |
|----------------|-----------------|-----------------|--------------------------|
| 10             | 55              | 50              | 42                       |
| H = 19         | 80              | 75              | 57                       |
| A = 7          | 105             | 100             | 78                       |
|                | 130             | 125             | 86                       |
|                | 155             | 150             | 99                       |
| 13             | 55              | 50              | 78                       |
| H = 25         | 80              | 75              | 106                      |
| A = 8          | 105             | 100             | 127                      |
|                | 130             | 125             | 159                      |
|                | 155             | 150             | 177                      |
|                | 180             | 175             | 210                      |
|                | 205             | 200             | 235                      |
| 16             | 80              | 75              | 161                      |
| H = 32         | 105             | 100             | 203                      |
| A = 9          | 130             | 125             | 254                      |
|                | 155             | 150             | 284                      |
|                | 180             | 175             | 322                      |
|                | 205             | 200             | 359                      |
|                | 255             | 250             | 438                      |

### Stud Material & Specifications

Low Carbon Steel (MS) as per AWS D1.1/ISO 13918

Stud shall be made from cold drawn bar stock conforming to requirement of ASTM A 108, Specification of steel bar, carbon, cold-finished, standard quality grade 1010 through 1020, inclusive either semi-killed or killed aluminum or silicon de-oxidation.

## S3L Shear Concrete Studs (PE)



### INDUSTRY: CONSTRUCTION

| Stud Dia. (MM) | Length (MM) BWL | Length (MM) AWL | Weight (Approx.) Kg/1000 |
|----------------|-----------------|-----------------|--------------------------|
| 19             | 55              | 50              | 156                      |
| H = 32         | 80              | 75              | 216                      |
| A = 10         | 105             | 100             | 274                      |
|                | 130             | 125             | 334                      |
|                | 155             | 150             | 393                      |
|                | 180             | 175             | 451                      |
|                | 205             | 200             | 487                      |
|                | 230             | 225             | 570                      |
|                | 255             | 250             | 620                      |
|                | 305             | 300             | 717                      |
| 22             | 105             | 100             | 381                      |
| H = 35         | 130             | 125             | 462                      |
| A = 11         | 155             | 150             | 542                      |
|                | 180             | 175             | 622                      |
|                | 205             | 200             | 675                      |
|                | 230             | 225             | 753                      |
|                | 255             | 250             | 838                      |
|                | 280             | 275             | 906                      |
|                | 305             | 300             | 967                      |
|                | 355             | 350             | 1138                     |
| 25             | 105             | 100             | 495                      |
| H = 41         | 130             | 125             | 600                      |
| A = 12.5       | 155             | 150             | 704                      |
|                | 180             | 175             | 798                      |
|                | 205             | 200             | 902                      |
|                | 255             | 250             | 1079                     |

### Stud Material & Specifications

Low Carbon Steel (MS) as per AWS D1.1/ISO: 13918

Stud shall be made from cold drawn bar stock conforming to requirement of ASTM A 108, Specification of steel bar, carbon, cold-finished, standard quality grade 1010 through 1020, inclusive either semi-killed or killed aluminum or silicon de-oxidation.